

# UBmatrix XBRL Solutions

A complete suite of products from the leading expert and trusted partner

UBMATRIX™



## Why UBmatrix?

- **Most complete set of software for XBRL-based business reporting**
- **Advanced validation and XBRL Formula support**
- **Trusted XBRL technology partner to leading software vendors**
- **Extensive range of Business partners experienced in the local reporting requirements and process**

UBmatrix is one of the founding developers of the eXtensible Business Reporting Language (XBRL) standard and a key contributor to major XBRL taxonomies and implementations worldwide. With its combination of products and experience, UBmatrix is uniquely qualified to aid companies in implementing solutions that leverage this technology.

The UBmatrix suite of products include the underlying processing engine, desktop development tools, desktop and server deployment platforms, storage and packaged solutions for regulatory filings. UBmatrix products span the full lifecycle of development, and deployment of XBRL applications.

The UBmatrix product suite includes the following components:

### UBmatrix™ XBRL Processing Engine

The UBmatrix XBRL Processing Engine is designed for high volume, large scale processing of XBRL documents providing both taxonomy and instance document validation and transformation modules. The processing Engine is built on an extensible object-oriented architecture and enables developers to easily integrate XBRL processing into either Java or .NET applications on a server or a desktop. The processing engine fully conforms to the latest XBRL standards and supports the XBRL 1.0 formula specification

### UBmatrix™ Enterprise Application Suite

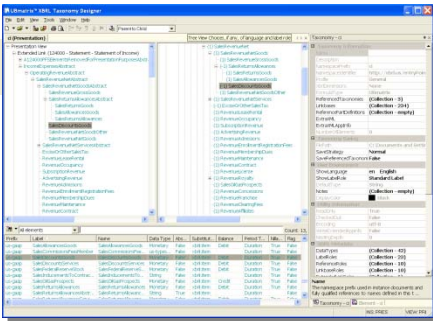
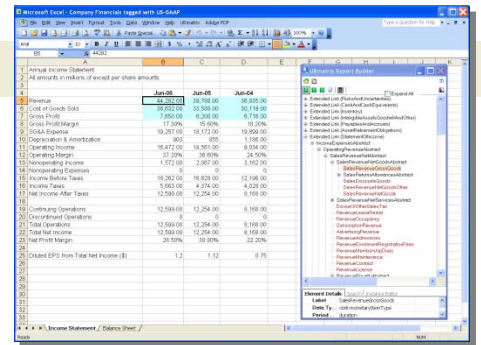
UBmatrix Enterprise Application Suite™ (EAS) is a product suite for the design, development and deployment of large-scale reporting and consolidation applications that leverage XBRL. It features two key elements. Server-based Taxonomy Manager provides maintenance of existing taxonomies and extensions, offering a complete audit trail. Server-based Reporting Manager provides management of workflow and submission of XBRL instance documents to the server. It facilitates the review and analysis of XBRL instance documents, including feedback on document validation and submitter taxonomy extensions. Enterprise Application Suite is built on UBmatrix's proven processing engine for document validation and processing.

### UBmatrix™ XBRL Database Adapter

XBRL Database Adaptor is a powerful solution for managing, storing, and analyzing XBRL data using a standard database environment. It supports both fact and taxonomy based queries. It provides the speed, scalability, and security of standard databases environments while providing the query semantics of XBRL.

## UBmatrix™ Report Builder

Report Builder seamlessly integrates with Microsoft® Excel to assist in preparing XBRL report submissions. It leverages the familiar user interface of Excel enabling users to easily prepare, review, and analyze data in XBRL documents. Leveraging the UBmatrix XBRL Processing Engine, Report Builder provides built-in XBRL validation and formula processing. It also includes an embedded rendering tool for SEC filings.



## UBmatrix™ XBRL Taxonomy Designer

A desktop application designed for building, extending, and maintaining XBRL taxonomies. It provides a complete integrated development environment that features an instance document editor, a built-in XBRL 2.1 compliant processor, a business rules editor, and input document mapping tools. The Taxonomy Designer user interface offers multiple views, including concept relationships, calculations, languages, and properties that stay synchronized as the taxonomy is browsed.

## Example UBmatrix Customers



## UBmatrix Partners



UBmatrix, Inc.  
333 Twin Dolphin Drive, Suite 145  
Redwood City, CA 94065  
USA

Tel: +1.650.264.4510  
Fax: +1.650.264.4515  
Email: info@ubmatrix.com